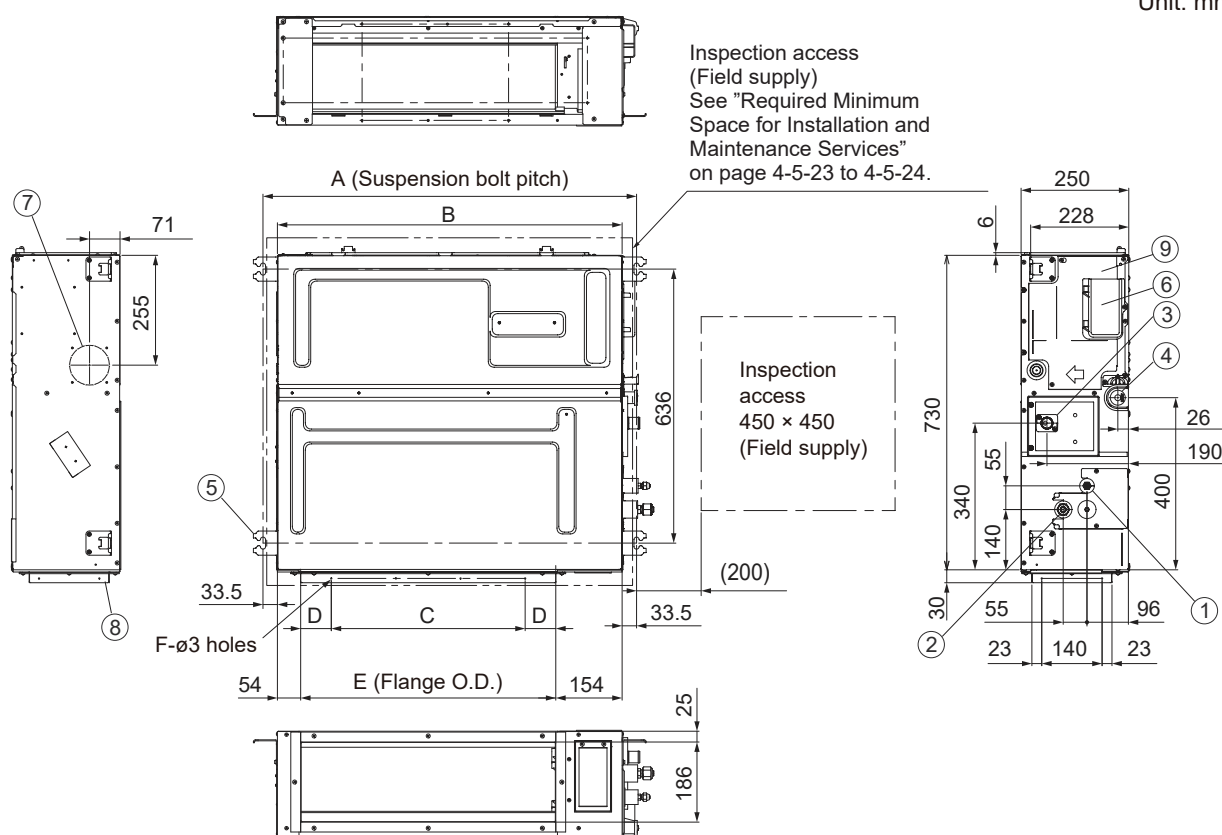


5. Middle Static Pressure Duct (Type F3)

Indoor unit : S-15MF3E5AN, S-22MF3E5AN, S-28MF3E5AN, S-36MF3E5AN, S-45MF3E5AN, S-56MF3E5AN, S-60MF3E5AN, S-73MF3E5AN, S-90MF3E5AN, S-106MF3E5AN, S-112MF3E5AN, S-140MF3E5AN, S-160MF3E5AN

Type	A	B	C	D	E	F
	mm	mm	mm	mm	mm	Q'ty
S-15MF3E5AN, S-22MF3E5AN, S-28MF3E5AN, S-36MF3E5AN, S-45MF3E5AN, S-56MF3E5AN	867	800	450 (Pitch 150 × 3)	71	592	12
S-60MF3E5AN, S-73MF3E5AN, S-90MF3E5AN	1,067	1,000	750 (Pitch 150 × 5)	21	792	16
S-106MF3E5AN, S-112MF3E5AN, S-140MF3E5AN, S-160MF3E5AN	1,467	1,400	1,050 (Pitch 150 × 7)	71	1,192	20

Unit: mm



①	Refrigerant tubing joint (liquid tube)	
	ø6.35 (flared)	S-15MF3E5AN, S-22MF3E5AN, S-28MF3E5AN, S-36MF3E5AN, S-45MF3E5AN, S-56MF3E5AN
②	ø9.52 (flared)	S-60MF3E5AN, S-73MF3E5AN, S-90MF3E5AN, S-106MF3E5AN, S-112MF3E5AN, S-140MF3E5AN, S-160MF3E5AN
	Refrigerant tubing joint (gas tube)	
③	ø12.7 (flared)	S-15MF3E5AN, S-22MF3E5AN, S-28MF3E5AN, S-36MF3E5AN, S-45MF3E5AN, S-56MF3E5AN
	ø15.88 (flared)	S-60MF3E5AN, S-73MF3E5AN, S-90MF3E5AN, S-106MF3E5AN, S-112MF3E5AN, S-140MF3E5AN, S-160MF3E5AN
④	Upper drain port VP20 (ø26 mm) 200 mm flexible hose supplied	
⑤	Bottom drain port VP20 (ø26 mm)	
⑥	Suspension lug (4 – 12 × 30 mm)	
⑦	Power supply outlet	
⑧	Fresh air intake port (ø100 mm) *	
⑨	Flange for flexible air outlet duct	
⑩	Electrical component box	

* Necessary to attach duct connecting flange (field supply).